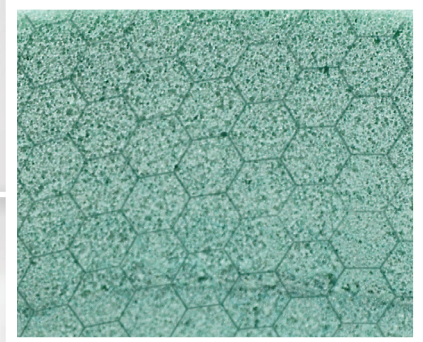
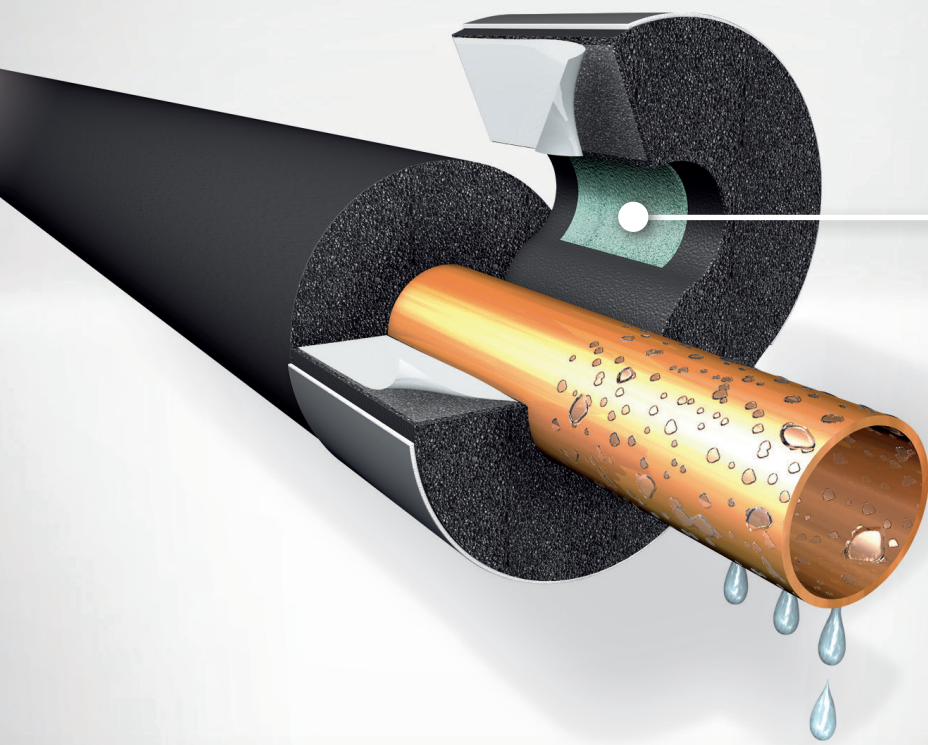


# Armafix®

THE NUMBER ONE SOLUTION FOR  
SAFE AND EASY-TO-INSTALL PIPE  
AND DUCT SUPPORT



NOW WITH PET  
LOAD-BEARING  
SEGMENT

Armafix® AF

Armafix® NH

Armafix® Ultima

## RE-ENGINEERED ARMAFIX PIPEHANGER

- better load capacity through comb structure within the closed-cell PET load-bearing segment
- 100 % recyclable
- outstanding fatigue resistance for maximum lifespan

 armacell®

# Technical Data - Armafix

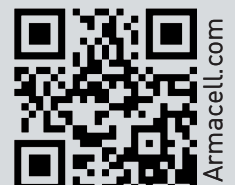
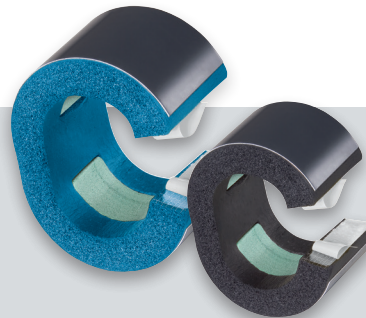
|                              |   |
|------------------------------|---|
| Brief description            | Pipe and duct support for refrigeration and air-conditioning installations to prevent condensation at fixing points. Thermally non-interacting single piece, with 2 PET sections and with self-adhesive closure. All dimensions are matching the corresponding Armaflex tube/sheet range. |
| Material type                | PET bearing segments, embedded in and glued to AF/Armaflex, NH/Armaflex or Armaflex Ultima elastomeric foam material. Outside bearing shells made of painted aluminium sheeting 0.8mm thick, which simultaneously serves as a vapour barrier for the PET bearing segments.                |
| Colour                       | dark grey   |
| Material Special Information | Traces of silicon can be found on protection paper/foil used to protect self-adhesive closures. Please contact our customer service for details.  |
| Applications                 | Thermally non-interacting mounting aid for tubes/sheets in refrigeration and air-conditioning applications, which are to be insulated with AF/Armaflex, NH/Armaflex or Armaflex Ultima.   |
| Remarks                      | When used in installations with intermittent temperatures, thermal length extensions may cause inherent pressure in the installation; this needs to be considered in the overall insulation construction. EC Declaration of Conformity no. 122701   |

| Property  | Value/Assessment   | Test*1  | Super-<br>vision*2 | Special Remark   |
|---|--|---------|--------------------|--|
| <b>Temperature Range</b>                        |  |         |                    |  |
| Temperature Range                               | max. service temperature   | +110 °C |                    |  |
|   | min. service temperature <sup>1</sup>                              | -50 °C  |                    |  |
| <b>Thermal Conductivity</b>                     |  |         |                    |  |
| Thermal Conductivity                            | Depends on the Armaflex substrate used.                            | EU 5526 | ○/●                | Declared acc. to EN ISO 13787<br>Tested acc. to EN 12667,<br>EN ISO 8497   |
| <b>Water vapour diffusion resistance</b>        |  |         |                    |  |
| Water vapour diffusion resistance               | Depends on the Armaflex substrate used.                            | EU 5526 | ○/●                | Tested according to EN ISO 12086,<br>EN 13469  |
| <b>Fire performance</b>                         |  |         |                    |  |
| Reaction to fire                                | When installed, as the used insulation material                    | EU 5526 |                    | Classified acc. to EN 13501-1  |
| Practical Fire Behaviour                        | Self extinguishing, does not drip, does not spread flames.         |         |                    | Tested according to EN 22286   |
| <b>Acoustic Performance</b>                     |  |         |                    |  |
| Reduction of structure-borne sound transmission | According to used insulation layer in clamp / pipe fastener        |         |                    | According to DIN 4109  |
| <b>Other technical features</b>                 |  |         |                    |  |
| Density   | 100 kg/m <sup>3</sup> (pipe bearing segments)                      |         |                    |  |
| Storage & Shelf life                            | Products with self adhesive closures to be installed within 1 year |         |                    | Can be stored in dry, clean rooms at normal relative humidity (50% to 70%) and ambient temperature (0 °C – 35 °C). |

<sup>1</sup> For temperatures below -50 °C please contact our Customer Service Center to request for the corresponding technical information.

\*1. Further documents such as test certificates, approvals and the like can be requested using the registration number given.

\*2  
●: Official supervision by independent institutes and /or test authorities  
○: Own in-factory quality monitoring



Armacell.com

## Armacell GmbH

Robert-Bosch-Straße 10 · DE-48153 Münster  
Phone +49 (0) 251 / 76 03-0 · Fax +49 (0) 251 / 76 03-448  
www.armacell.com · info@armacell.com